



SOR Standard semitrailer

TECHNICAL SHEET MODEL SP71 Double deck

SOR IBÉRICA SA
Ctra Albalat, s/n
46600 Alzira (Valencia) Spain
Tel 0034 96 245 77 00
Fax 0034 96 245 77 18
marketing@soriberica.com

Dimensions	External	Internal
Lenght	13550mm	13355mm
Width	2590mm	2470mm
Height	2815mm	2600mm
Description	Thickness	
Floor	125/145mm	
Front wall	105mm	
Rear frame	90/60mm	
Side wall	60mm	
Roof	90mm	
LOCKS	2 ST ST	
HINGES	6 ST ST	



Box standard specification

Floor composition

- GRP (glassfiber reinforced plastic) finished in grey colour and specially reinforced for 8Tm forklifts.
- Two drain pipes located at the back side with perforated st screen
- Rear mudflaps
- Mudguards and antispray system according to EU directives

Front wall composition

- Monoblock front bulkhead aerodynamically designed
- Grooved bulkhead for improved air flow

Rear frame composition

- Special high resistance 3mm stainless steel rear frame
- Five rear horizontal and 2 vertical rubber bumpers
- Rear mudflaps at the rear under run protection
- Galvanised steel sliding rear access ladder with 2 steps
- Five lips rubber seals on rear doors
- Antishock rubber on doors to protect on opening

Side walls composition

- 250x50mm Aluminium kickstrip
- St st door retainers
- 12 recessed rails in each side wall (10 double and 2 single) allocated every 1210mm
- 22 sliding captive decking beams for 1000kg
- Mudguards with mudflaps and antispray system according to EU regulations

Roof composition

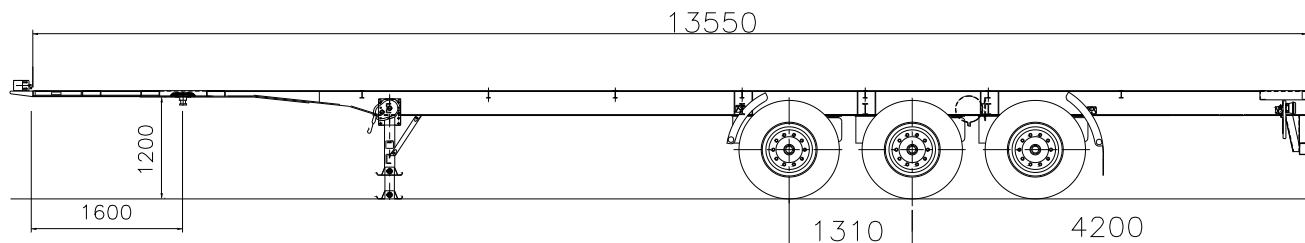
- Four internal lights recessed into the roof with switch

Optional equipment

Accessories

- Recessed rails
- Air conduction in plastified textile or aluminium
- Multitemp transport
- Internal height ><2600mm

Chassis technical characteristics



Standard equipment

Chassis fitting

- Total weight over king pin: 13/15.000 Kg
- Total weight in the central tridem: 27.000 Kg
- Admitted technical weight: 40.000 Kg
- Landing legs HAACON with semi-circular foot and supporting plate
- Sandblasted 2 ½ SA
- 2 components epoxy protection for all pieces before welded
- 2" king pin bolted type
- Paint: Together with epoxy 2 components protection, the chassis will be finished with polyurethane 2 components paint colour SOR Grey
- Welded I-beams with cross members in one piece, all manufactured with st. St. 52.3 flat neck type
- Approved rear under-run bumper with continuous mudflaps
- Two wheel shocks
- Spare wheel carrier
- St. St rear control box

Axles

- BPW ECO PLUS axles of 9Tons with brake size for drums 420x180mm or disc brakes 43/45 asbestos free lining.
- Automatic slack adjuster brakes (only for drum brakes)
- Pneumatic air suspension BPW SLM/ALO WABCO with raise and low valve
- Lift axle
- Braking system homologated according to EC regulations
- Wabco pneumatic valves circuit
- ABS Wabco VCS II 2 sensors/2 modulators on central axle
- Compact ALB Wabco
- Parking brake by 4 spring brake cylinders on 2nd and 3rd axle
- Seven tyres 385/65 R 22.5 mounted on rims 22.5x11.75 Wheel spigot mounted

Lights

- Electrical system watertight with electrical box according to UE directives
- Seven chamber rear lights
- 4+4 sidelights
- Plates and supports for rear chamber lights in SS AISI 304

Optional equipment

Accessories

REAR FRAME

- Silentblock rear bumper
- Bumper
- Demountable rear bumper
- Recessed gummi rear bumpers

WHEELS

- Aluminium ALCOA rims
- Boltcap alloy rims
- Individual mudguards
- 385/55 R.22.5 wheels wheel spigot mounted
- Wheel nut indicator

LIGHTS

- Three functions Hella rear round lights
- Rear working lamp
- Rear light protection
- Double rear chamber light

LANDING LEGS

- Two speed JOST MODUL
- JOST MODUL HD
- Reinforced HAACON 2030
- HAACON 2035

AXLES

- Drum brakes 420x200
- 2 axles ABS
- 1 axle EBS
- 2 axles EBS
- Diapress antibacum system
- Brake pads kit indicator
- St. St cables for axle
- 10 Tons axles
- Autosteering axle with drum brakes
- Autosteering xles with disc brakes
- Electrical lift axle
- TRIDEC system

ACCESSORIES

- JOST/BPW Hubodometer
- Basket wheel
- Rolling wheel support
- Sideguard
- Mavis rail
- Greasing system
- 2 wheel socks
- Acoustic trailer indicator (whistle with the reverse gear)
- Reinforced King pin for 15 Tons
- Sliding captive decking beams box

